



Appendix 2 - 26.11.12

# CHEL TENHAM

## BOROUGH COUNCIL

### Community Governance Review 2013

## Review of Parish Council Boundaries Information and Consultation Document



Dear Householder,

We are writing to you because we are reviewing some of the parish council boundaries in Cheltenham and we want to know whether your community would like to become part of a parish council area. The last review of parish council boundaries took place in 2002.

The map on page 2 shows the current parish council boundaries and the areas we are consulting (including your area) to see whether residents would like to be represented by a parish council. To help you decide, the parish councils have provided a summary of their recent achievements and the benefits of living in a parished area. **Cheltenham Borough Council will use the results from the questionnaire at the back of this booklet to decide whether there is support for extending the parish council areas.**

This booklet explains:

- What a parish council does;
- How much the parish council tax (precept) costs per household per year;
- Why we are doing this review;
- What the parish councils have achieved for their communities and why they would like to extend their boundaries;
- How to have your say

Thank you in advance for your time in reading this document and giving us your feedback.

If you have any queries, contact [communityservices@cheltenham.gov.uk](mailto:communityservices@cheltenham.gov.uk) 01242 774960

## ABOUT PARISH COUNCILS

Parish councils are the first tier of local government and cover a smaller geographical area than borough or county councils. The role of a parish council is to represent the local community; provide services to meet local needs, and improve quality of life and community well being.

Parish councils often provide facilities such as allotments, bus shelters, village halls, children's playgrounds, parks, noticeboards and in the case of larger councils, sometimes also street light and playing fields. They have a significant input to planning, and are statutory consultees for individual planning applications.

There are currently around 10,000 parish councils in England and Wales. In Cheltenham there are 5 parish councils and they are made up of representatives who live or work within the area. Parish councillors are not paid and usually serve a four year term.

Recent government legislation aims to pass more power down from central government to local communities; and parish councils are being given more powers to help them do more to support their community. This includes playing a role to help sustain local services which other public sector bodies can no longer afford to provide.

Households within a parish council area are subject to a precept, which is the amount of council tax added to the bill per household for parish council services. The amount varies, based on the number of households within the parish, and the cost of the services the council provides.

### CURRENT CHELTENHAM PARISH COUNCIL FIGURES\*

| 2011/12 tax year       | Charlton Kings | Leckhampton with Warden Hill | Up Hatherley | Prestbury | Swindon |
|------------------------|----------------|------------------------------|--------------|-----------|---------|
| Number of electors     | 8,110          | 3,803                        | 4,775        | 6,002     | 1,475   |
| Number of councillors  | 15             | 12                           | 13           | 15        | 9       |
| *Precept per household | £11.42         | £16.84                       | £9.33        | £19.42    | £13.34  |
| Total precept raised   | £48,400        | £31,500                      | £23,000      | £57,680   | £9,500  |

\*figures shown are for a band D property and show the charge **PER YEAR**. These figures may fluctuate.

## ABOUT THE CONSULTATION

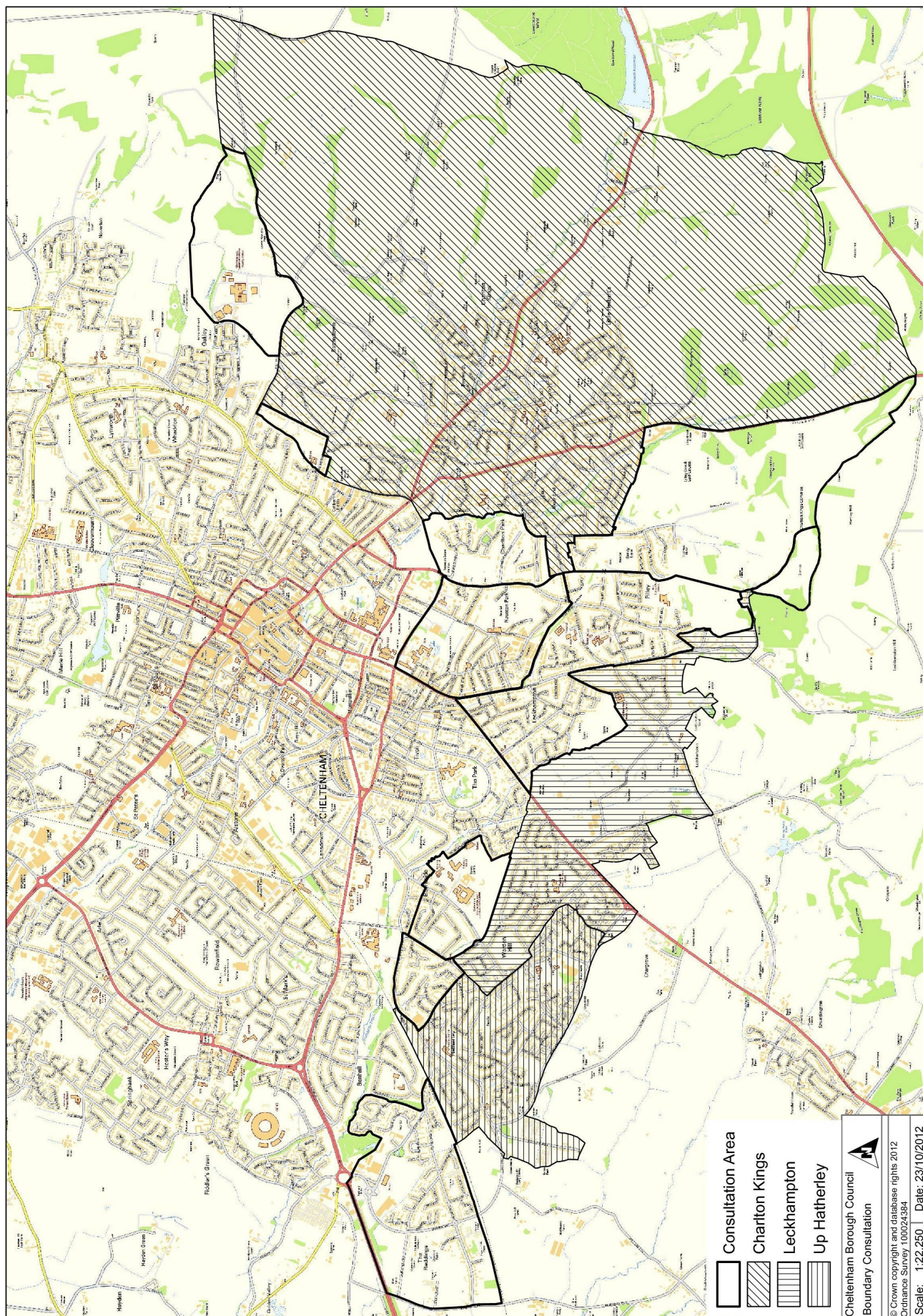
Cheltenham Borough Council is reviewing the parish council boundaries of Charlton Kings, Leckhampton with Warden Hill and Up Hatherley, at the request of the parish councils and also consulting residents in the Reddings about the area being parished. Prestbury and Swindon Parish Councils are satisfied with their boundaries at this time.

This document has been circulated to all households in the consultation areas shown on the map at the centrefold of this booklet. In addition to this, four public meetings will be held and residents are invited to attend and discuss their views on the proposed changes. The comments we receive will be used to help shape any new boundary proposals. These later proposals will be available on the council's website for public comment before they are submitted to full council for consideration. The borough council does not want to



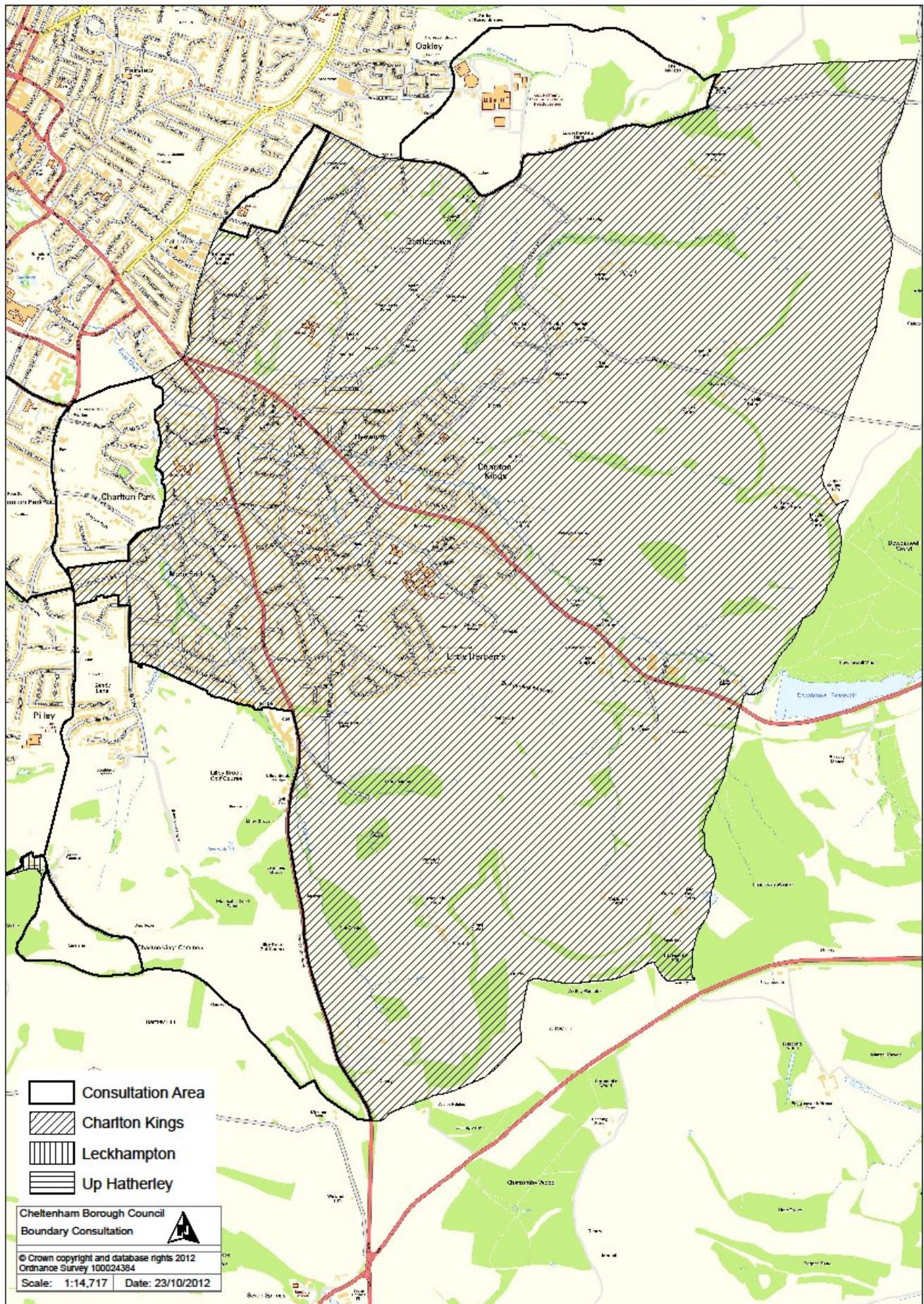
recommend any changes without first asking the people affected by the proposals for their views. Please take the time to read this document and have your say by completing the questions at the back of this document and returning them in the freepost envelope.

## MAP OF THE PARISH COUNCIL AREAS AND AREAS BEING CONSULTED





## MAP OF PROPOSED CHARLTON KINGS AREA





Contact: [ckparishcouncil@btconnect.com](mailto:ckparishcouncil@btconnect.com)

[www.ckparish.co.uk](http://www.ckparish.co.uk)

The parish council through its policies and work programmes aims to deliver a number of key priorities for ensuring the well-being of our community. These include maintaining the character of the parish; ensuring a safe environment for residents; promoting a feeling of inclusiveness; supporting the provision of adequate facilities and conducting our business in a way that minimises our carbon footprint.

**Recent achievements include:**

- Providing the borough council with planning recommendations based on detailed local knowledge and understanding and contributing to planning policy frameworks and a range of area management plans
- Championing local needs when responding to consultations, on issues such as local libraries, local transport plans and changes to local bus services
- Actively challenging service providers to give sufficient priority to Charlton Kings issues such as highway maintenance schemes
- Improving the management of our four allotment sites to raise the standard of management of plots, in order to ensure that all are fully used
- Liaising with county council to enhance the standards of our footpaths and bridleways and organising volunteer working parties
- Enhancing Youth Services by establishing a Youth Forum that meets regularly
- Improving youth play facilities by installing better lighting to the outdoor games area and with the borough council, modifying the Beeches skateboard park to improve its usability
- Taking responsibility for setting up community meetings; supported by Cheltenham South local policing team and Cheltenham Borough Council
- Maintaining provision of village centre public toilets following proposed closure by the borough council
- Improving the standard of winter gritting of footways
- Refurbishment of the War Memorial and the addition of the names of those fallen in World War Two
- Saving the Stanton Room as a community facility for local groups

**Current projects:**

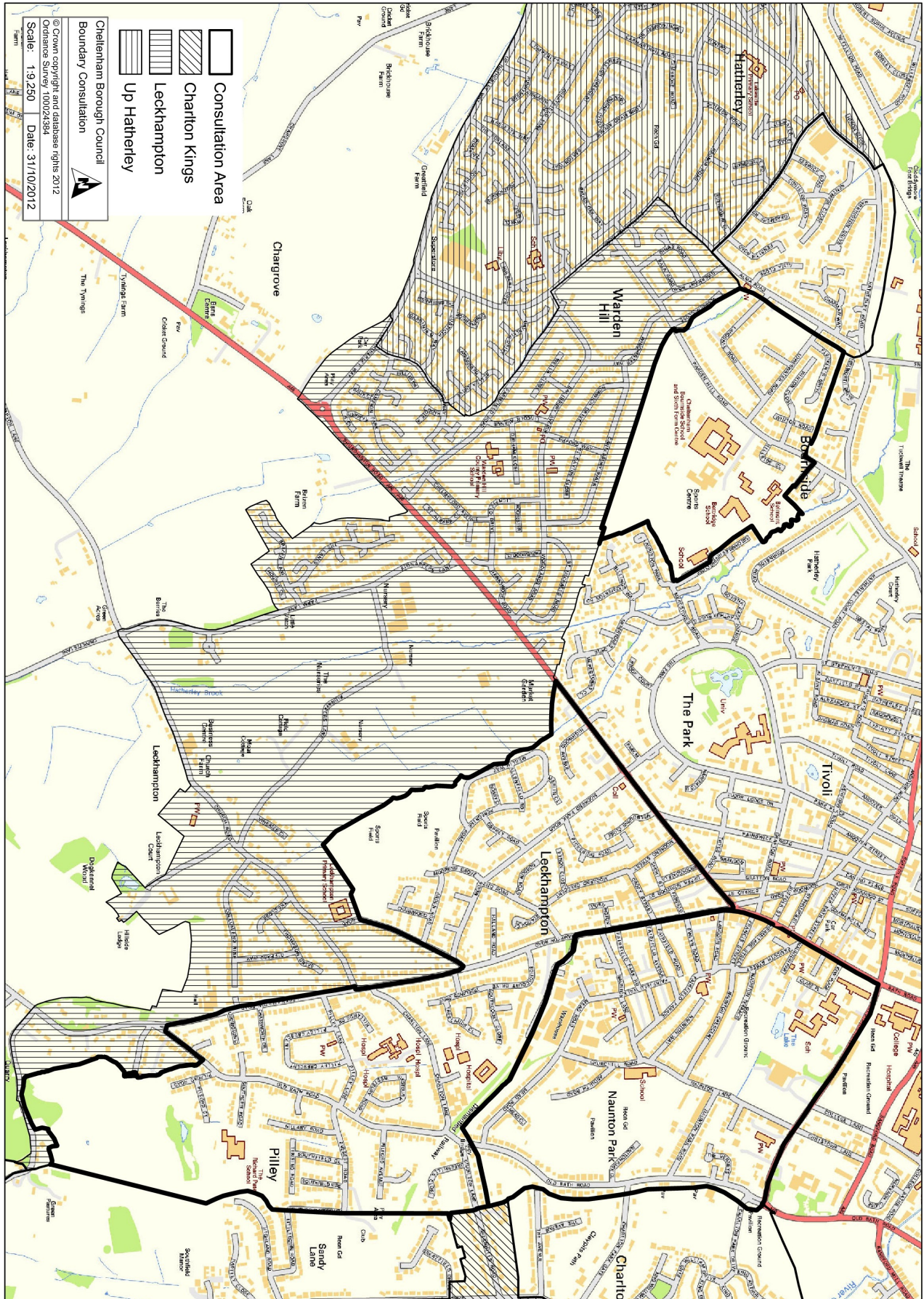
- Redevelopment of the Stanton Room complex to provide a community hub and new permanent office for the parish council, enabling better access to the public whilst maintaining and improving the hall for lettings
- Our redevelopment proposals include plans to rebuild the public toilets to a much improved standard
- Negotiations for a police presence in our new office development



- Further embed the Youth Forum within the workings of the parish council to ensure young people's views are heard when determining priorities

### Proposed boundary changes:

The parish council sees the opportunity to realign boundaries as a chance to offer people who either historically or for service provision reasons see Charlton Kings as part of their community, eg school provision. The proposals include the roads off Sandy Lane, Charlton Park the small area on the unparished side of Oakley Road and the area including the old





LECKHAMPTON WITH WARDEN HILL

01242 518008

Contact: [leckwardenhillpc@btinternet.com](mailto:leckwardenhillpc@btinternet.com)

[www.lwwh.org.uk](http://www.lwwh.org.uk)

The parish council acts on behalf of residents and collects and represents their views. It works with borough and county councillors and officers. Two borough councillors who represent Leckhampton and Warden Hill also sit on the parish council. Parish councillors are unpaid and cover their own expenses.

**Recent achievements include:**

- The council provides and maintains (personally or via voluntary groups and the borough council) various amenities in the parish including play areas and open spaces, the war memorial, shrubbery and flowers, and facilities such as seats, notice boards, shelters, paths and grit bins.
- In the past year, the council has made important submissions on the Joint Core Strategy between Cheltenham, Gloucester and Tewkesbury; and on the problems surrounding the current proposals for major housing developments in Leckhampton and Shurdington. Under the 2011 Localism Act, the council is developing a neighbourhood plan jointly with Shurdington Parish Council. The council comments on all planning applications within the parish and helps to prevent unsuitable developments and to improve proposals where appropriate.
- Individual councillors act as local wardens on open spaces and recreational amenities, roads, traffic and transport problems, security and policing, communications, litter and waste, pavements, parking, hedges and footpaths, flood prevention, and gritting of snow and ice.
- The parish council provides financial grants to voluntary groups that serve the local community and environment. The council recently set up and helps to support the Brizen Young People's Centre as a facility for young people locally. This youth work now operates as a charity and the Council also makes the Brizen Centre building available for local people to use.
- The council is seeking to encourage more voluntary action as this will be vital to sustain our quality of life in the face of the very large 'austerity' cuts in government funding coming over the next five years.

**Proposed boundary changes:**

Many areas of Leckhampton are currently outside the parish and some residents feel strongly that they should be included in the parish so that their interests are represented and to help strengthen community action. The recommendation is to enlarge the parish to include the whole of the borough ward of Leckhampton and also adjacent areas that are part of the Leckhampton community. These areas are: between Shurdington Road and



Leckhampton Road up to the Norwood Arms; the Pilley area; the area around Bournside School; and Naunton Park. There is a desire for a mutual boundary to be formed between Leckhampton with Warden Hill and Charlton Kings Parish Councils. This will also reduce the precept charges per household as administrative costs will be shared over more residents.

#### MAP OF PROPOSED UP HATHERLEY AREA





The parish council currently has 13 councillors, all volunteers who are elected to serve for four years. The council has a part time paid clerk, and offices in the Up Hatherley Village Hall. The council business is conducted by working groups which work on planning and development control; open spaces and environmental services; highways, leisure and culture and finance. The council works closely with the borough and county council and is represented on various outside bodies. Members of the council also sit on boards of management at local schools. The council produces a yearly magazine, The Record, which has been in existence for nearly 40 years.

**Recent achievements include:**

- Ensuring that a replacement playing field was made available following the loss of the M & G site
- Supporting sports, in particular the annual football competition
- Up Hatherley in Bloom gardens competition
- Responding to local planning applications on behalf of the community
- Maintaining the annual precept at the same level since 2007
- Liaising with police community support officers about actions against crime and anti social behaviour, making this part of Cheltenham the safest in town
- Annual carol singing on the Green
- Providing local flood and snow wardens to monitor and report problems in the area
- Working on traffic calming measures
- Supporting local bus services
- Sponsorship of Up Hatherley Youth Council
- Liaison with Gloucestershire Highways ensuring that sufficient priority is given to highways maintenance in the parish.

**Proposed boundary changes:**

The parish council feels that the present boundary of Up Hatherley does not accurately reflect the community of interest of the area. In particular, we feel the area bounded by Alma Road, Hatherley Road and Windermere Road, should be consulted and given the opportunity to be represented on the parish council. People living here have ties with the parish council area and may use the village hall, the church, Post Office and the schools. Residents in that area also enter the parish council's garden competition, and have won the prestigious award for best garden twice in recent years.

We know that decisions are made about various services affecting this area, such as policing; traffic management; keeping the environment clean and planning development without the people having a direct say in what is happening. Because of this we think it would make sense for the area to become a designated ward of the parish council and to elect councillors to represent it on the parish council. Please help us make the parish boundary meaningful, so that it properly represents the community of interest of 'Up Hatherley', a parish that can trace its roots back to Saxon times, and once included the area in which you now live.

**THE REDDINGS**



The area known as The Reddings was previously a ward of the parish of Badgeworth and was represented on Badgeworth Parish Council by three councillors. In the 1980s, local government re-organisation saw the boundary with Tewkesbury borough change and The Reddings became part of Cheltenham borough.

Cheltenham Borough Council and the working group carrying out this boundary review wish to give the people of the Reddings the opportunity of once again being represented by a parish council as well as by the borough councillors. This would give the area that most local form of government, and more control over the matters directly affecting the quality of life of its residents, as set out on page 2 of this booklet.

There are 2 ways that The Reddings could be represented by a parish council. These are:

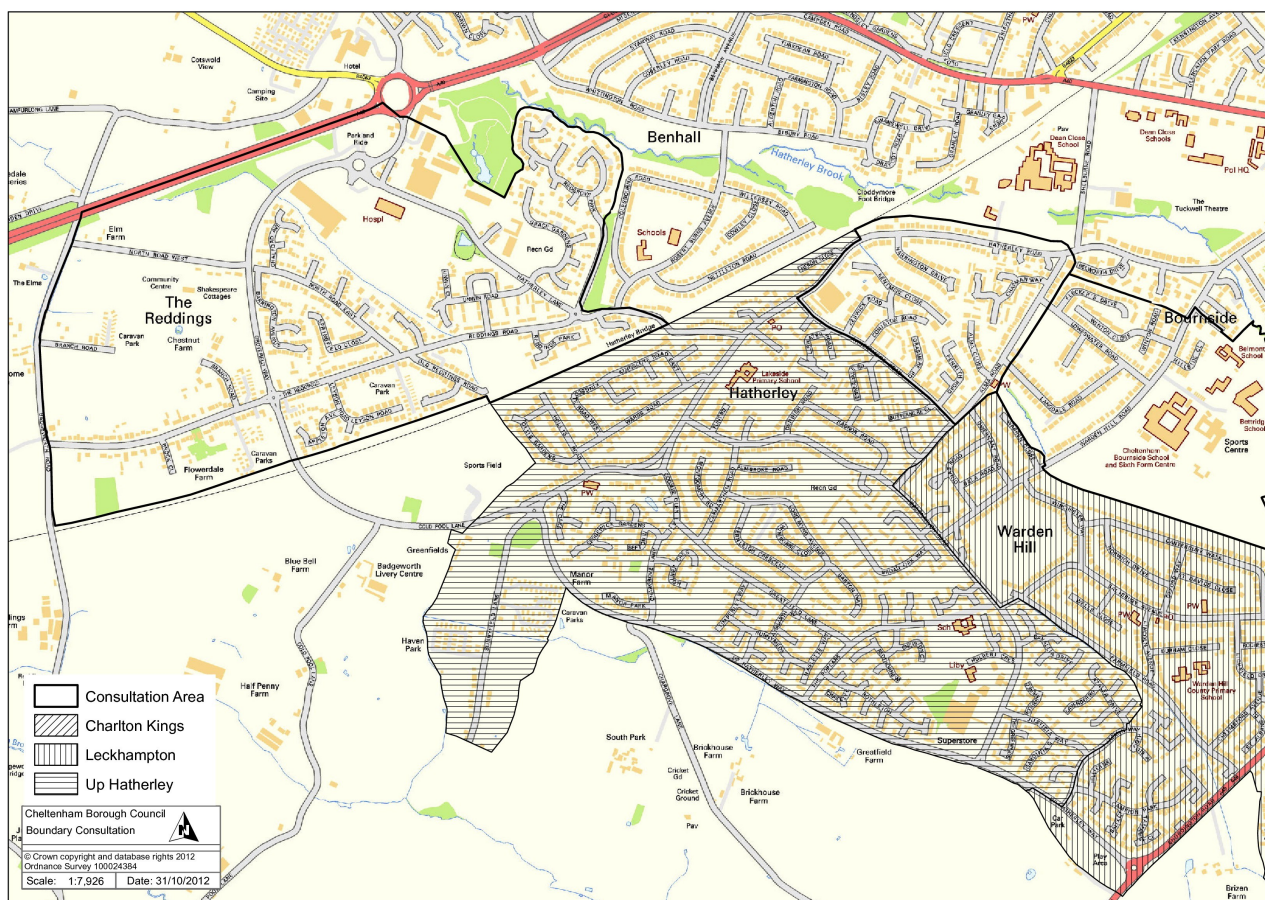
- by joining with Up Hatherley to form a larger, joint parish council, with seats for councillors representing the Reddings ward.

or;

- by setting up a new parish council for the Reddings,

If a new parish council were to be set up, there would be some cost and time involved in the administration, which would include for example engaging a parish clerk and these costs would be reflected in the precept. The option of combining with Up Hatherley would be cheaper as costs would be shared and there is proximity between the two communities.

## MAP OF THE REDDINGS CONSULTATION AREA



## YOUR FEEDBACK

***Please note you MUST include your full address for this response to be taken into account. Your details will not be shared.***

|          |           |
|----------|-----------|
| Name:    |           |
| Address: |           |
|          | Postcode: |

1. What do you think about the proposals being made for your area to become part of a parish council area?

Strongly agree ☐      Agree ☐      Don't mind ☐      Disagree ☐      Strongly disagree ☐

2. Do you agree that your community belongs with the parish council that is proposed? (If you live in The Reddings, please answer question 3 instead)

Agree ☐ Don't mind ☐ Disagree ☐

If no, please state your preferred alternative: \_\_\_\_\_

3. For residents of The Reddings: If you agreed with question 1, which option do you support?

a) For The Reddings to become a ward of Up Hatherley Parish Council, represented by its own parish councillors Yes ☐ No ☐

b) *For a new parish council to be set up for The Reddings* Yes ☐ No ☐

Please leave any comments you wish to make in connection with this consultation:

*Residents are invited to attend the following events to discuss the proposals in more detail:*

Venue/date/time

Venue/date/time

Venue/date/time

Venue/date/time



Cheltenham Borough Council would love to know if you are interested in being more involved in community activities:

*What do you care about in your local community?*

*What skills or knowledge can you bring to address what you care about?*

*What would it take for you to work with others who share what you care about?*

*If you are already involved in local community activity, please tell us a bit about it:*

If you would like to be more involved in your community and would like to know more, please leave your preferred contact details here:

Email:  
Telephone number:  
Use my postal address (tick) ☐

For more information on community working in Cheltenham, visit  
[www.cheltenham.gov.uk/community](http://www.cheltenham.gov.uk/community)



Please return this form to:  
Strategy and Engagement,  
Cheltenham Borough Council,  
The Municipal Offices  
Promenade  
Cheltenham  
Gloucestershire  
GL50 9SA