

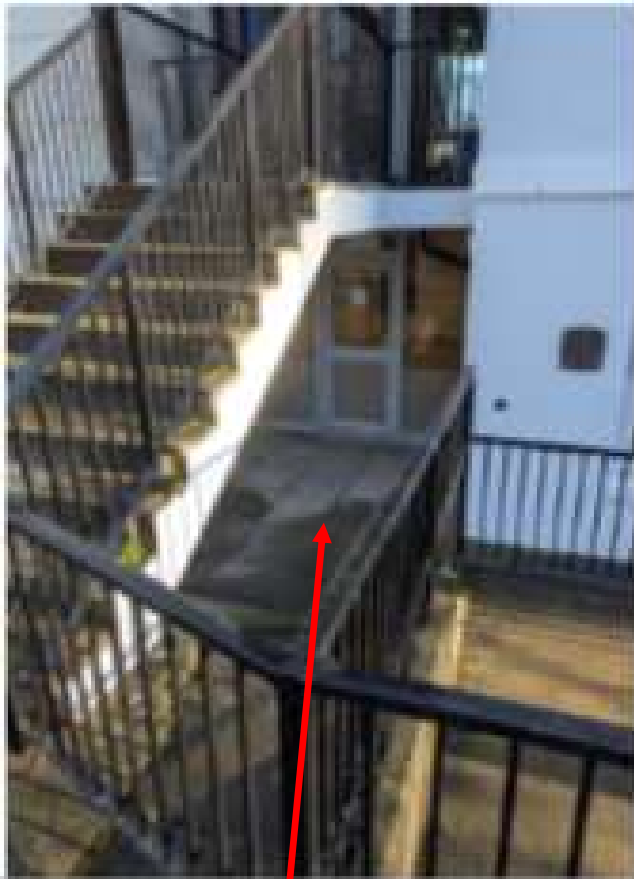
26/00240/FUL

Robert Harvey House

Proposal

Install demountable flood barriers in the 3x lower ground floor doorway porch areas





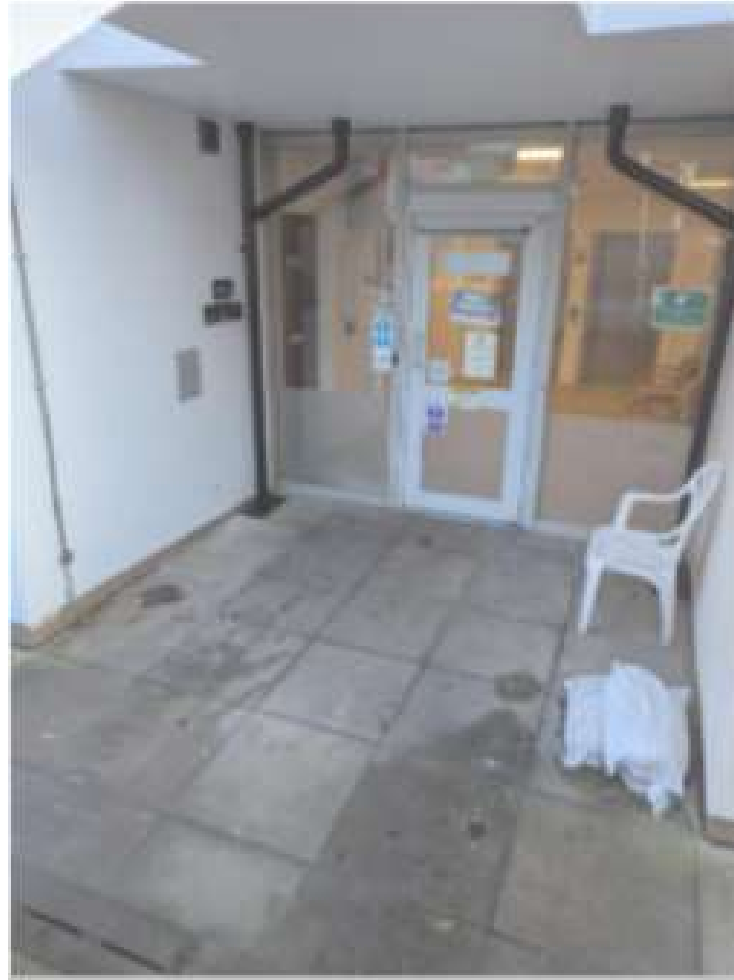
Northern entrance



Central entrance



Southern entrance



Existing view

Proposed- everyday use



Re-positioned guttering

Central concrete lintel and slot

Permanent slots

Proposed- during flooding



Demountable aluminium barriers

Key planning considerations

- Design
- Access
- Impact on conservation area
- Impact on neighbouring amenity
- Sustainability and climate change

Recommendation – Permit subject to conditions

- Time
- Approved drawings

