

Council tax support scheme 2026-27 consultation

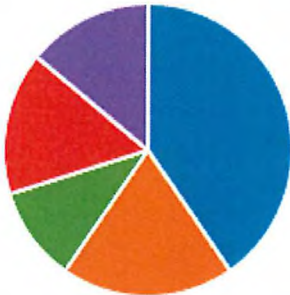
57 Responses

03:36 Average time to complete

Closed Status

1. Under the current scheme a person can receive 100 percent council tax support and does not have to make any contribution towards their council tax payments. Do you think that people should continue to receive 100 percent help towards their council tax?

Strongly agree	23
Agree	11
Neutral	6
Disagree	9
Strongly disagree	8



2. If you disagree with a person receiving 100 percent what do you think the maximum amount of help should be?

95 percent	11
90 percent	4
80 percent	7
75 percent	2
Less than 75 percent	11



3. At present, the scheme conditions allow an extra £100 per week of income to be ignored in the calculation of council tax support, where a person has a disabled child living in the household. Should this disregard be increased to £200 per week?

Yes	29
No	12
Neutral	13
Other amount	3



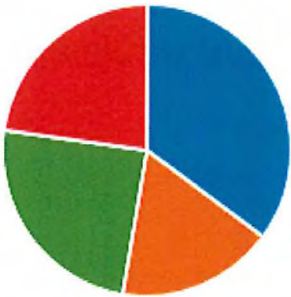
4. If you answered "other amount" to question 3, please state below how much you think the disregard should be per week

4		
Responses		
1	anonymous	Same as universal credit £411
2	anonymous	300
3	anonymous	200
4	anonymous	£200

Latest Responses

5. How do you think the council should continue to fund its council tax support scheme from April 2026?

By reducing the level of council tax...	20
By increasing the amount of council tax...	10
Reduce funding for council services...	14
Other	13



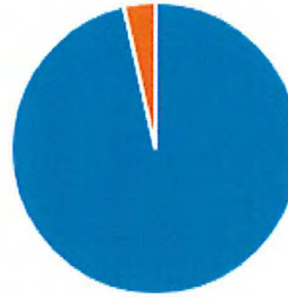
6. If you answered "other" to Q4 and would like to provide your own suggestions please use the box below.

11
Responses

Latest Responses
"Reduce funding for council services by first identifying effi..."

- 1 anonymous Support should be in the form of a loan and limited to the duration of a risk assured plan placed on the recipient to improve their circumstances so as repay the loan and not to need support in future
- 2 anonymous There are many ways this council has wasted money in Cheltenham I'd be more than happy to discuss further on 07771594414
- 3 anonymous From the profits made through the Council's investments.
- 4 anonymous Using money from the increased National Insurance contributions.
- 5 anonymous Help the more vulnerable residents and lower the cost of council tax
- 6 anonymous Pay there way in life
- 7 anonymous Central government to cover e.g through DWP financing it
- 8 anonymous No thanks
- 9 anonymous Perhaps by forming community events where the profits from them go towards council tax it might eliminate the need for people's bills to increase while leaving those who require support still able to receive it. I am unsure how much funding this would bring in or how you would go about this. However, I feel it would be an interesting and creative way to positively impact the community. Whilst still supporting everyone who cannot by tax by using the profits made off of selling things at these events. Just an attempt at a creative suggestion to help both sides of tax payers.
- 10 anonymous i don't know unfortunately
- 11 anonymous Reduce funding for council services by first identifying efficiency savings, reducing administrative costs, improving tax collection rates, and seeking alternative revenue sources (such as partnerships or grants) before considering cuts to essential services or increases in council tax.

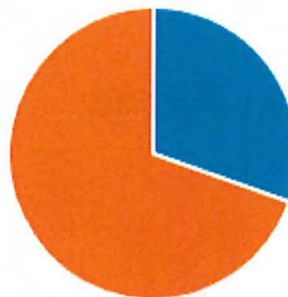
7. Are you a resident of the Cheltenham Borough area?



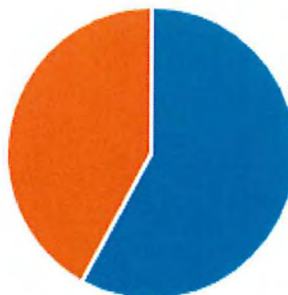
8. Are you registered for council tax purposes?



9. Do you currently receive council tax support?

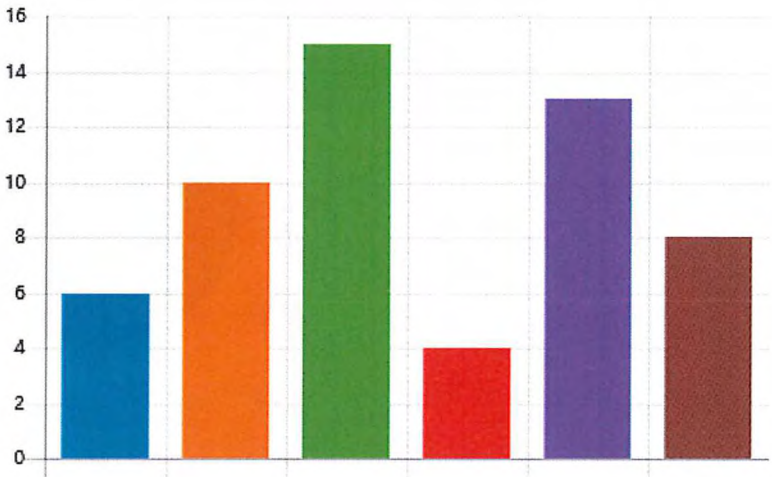


10. Are you currently in employment?



11. What is your age group?

18-24	6
25-34	10
35-44	15
45-54	4
55-64	13
65 years and over	8



12. Do you have a disability?

Yes	10
No	45

