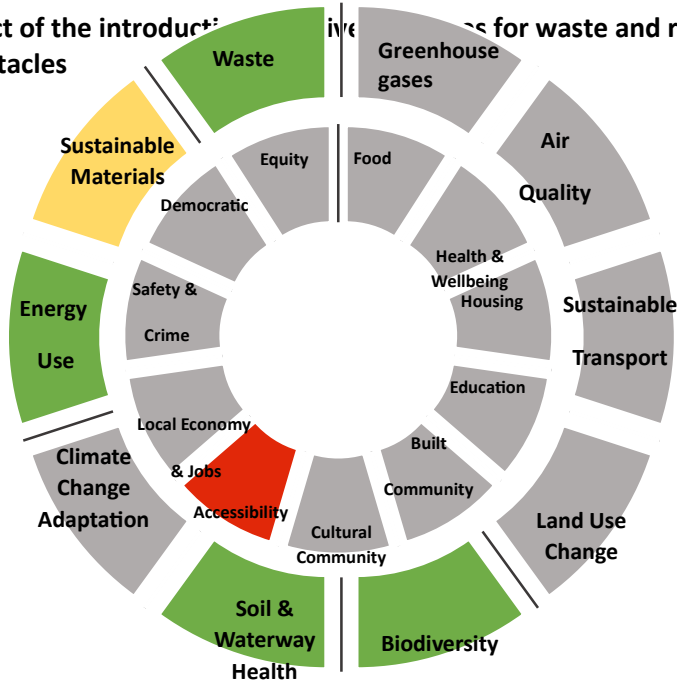


Impact of the introduction of recycling receptacles



Key

	Significant and/or long-term positive impact identified. No changes needed.
	Slight or short-term positive impact identified. No changes needed but could be reviewed to improve.
	Not applicable or no cause for concern.
	Slight or short-term negative impact identified. Review to identify possible improvements.
	Significant and/or long-term negative impact identified. Changes needed before proceeding.

This summary of the CIAT should be used to aid your decision making. Please note that red/amber segments simply mean that mitigations and changes should take place not that the project cannot go ahead.

Environmental	Scores	Justification	Recommendation
GHGs	0	Currently residents in Cheltenham can choose to collect recycling receptacles from the Municipal Offices or the HRC in Swindon Road and most residents tell us they do they enroute to somewhere else so it is not a specific journey. Removing the option to collect means that all deliveries will have to be made by Ubico and therefore specific journeys will be required however Ubico will seek to minimise the fuel use by reducing mileage by introducing a zonal approach to deliveries and using Hydrogen Treated Vegetable Oil, a drop in fuel, instead of diesel. Many of our residents will still be using an internal combustion engine fuelled by petrol or diesel rather than electric. If demand decreases then the number of deliveries will reduce, reducing GHGe further.	0
Air quality	0	See 1D above	0
Sustainable Transport	0	Residents will no longer need to collect recycling receptacles, they will all be delivered via a Ubico fleet using HVO not diesel where possible.	0
Land use change	0	N/A	0

Biodiversity	4	If the introduction of delivery charges reduces unnecessary demand then less plastic boxes and other receptacles will be issued which should be residents look after their receptacles better, reducing breakages and plastic pieces getting into the environment and cause environmental damage to habits and wildlife.	0
Soil and waterway health	4	See 6 D above	0
Climate Change Adaptation	0	N/A	0
Energy Use	4	Any reduction in the number of plastic receptacles required will reduce energy use in the manufacturing process which takes place outside of the borough. Recycling plastic content is used as much as possible but there is still a requirement for some virgin material.	0
Sustainable Materials	-1	A reduction in the number of plastic receptacles required will reduce the amount of recycling materials and virgin materials required to manufacture the receptacles. Disposal of broken boxes ensure they are recycled and used for other products. Old boxes are reused where possible.	0
Waste	4	Any reduction in the number of recycling receptacles available for residents to use, should cost be a financial barrier to participation in recycling, is likely to reduce the Council's recycling rate % and income from the sale of materials if tonnages go down further. Most residents should have adequate receptacles and only need to add to their numbers or replace something occasionally. Restrictions and charges for refuse capacity should support the reduction in residual waste.	0

Social	Scores	Justification	Recommendation
Food	0	N/A the introduction of charges for delivery includes a discount for those on benefits and is focused on waste disposal not access to food.	0
Health	0	N/A	0
Housing	0	N/A	0
Education	0	N/A	0
Community	0	N/A	0
Culture	0	N/A	0

Accessibility	-4	Financial costs may be a barrier to participation in recycling however the Equality Impact Assessment carried out deals with these issues and the delivery charge for those in receipt of benefits will be discounted and should mitigate majority of this.	0
Local Economy and Jobs	0	N/A	0
Safety	0	N/A	0
Equity	0	Refer to the EIA and 7d	0
Democratic Voice	0	N/A - consultation has been carried out for the implementation of the charging regime as part of the budget consultation process for 2024/25	0