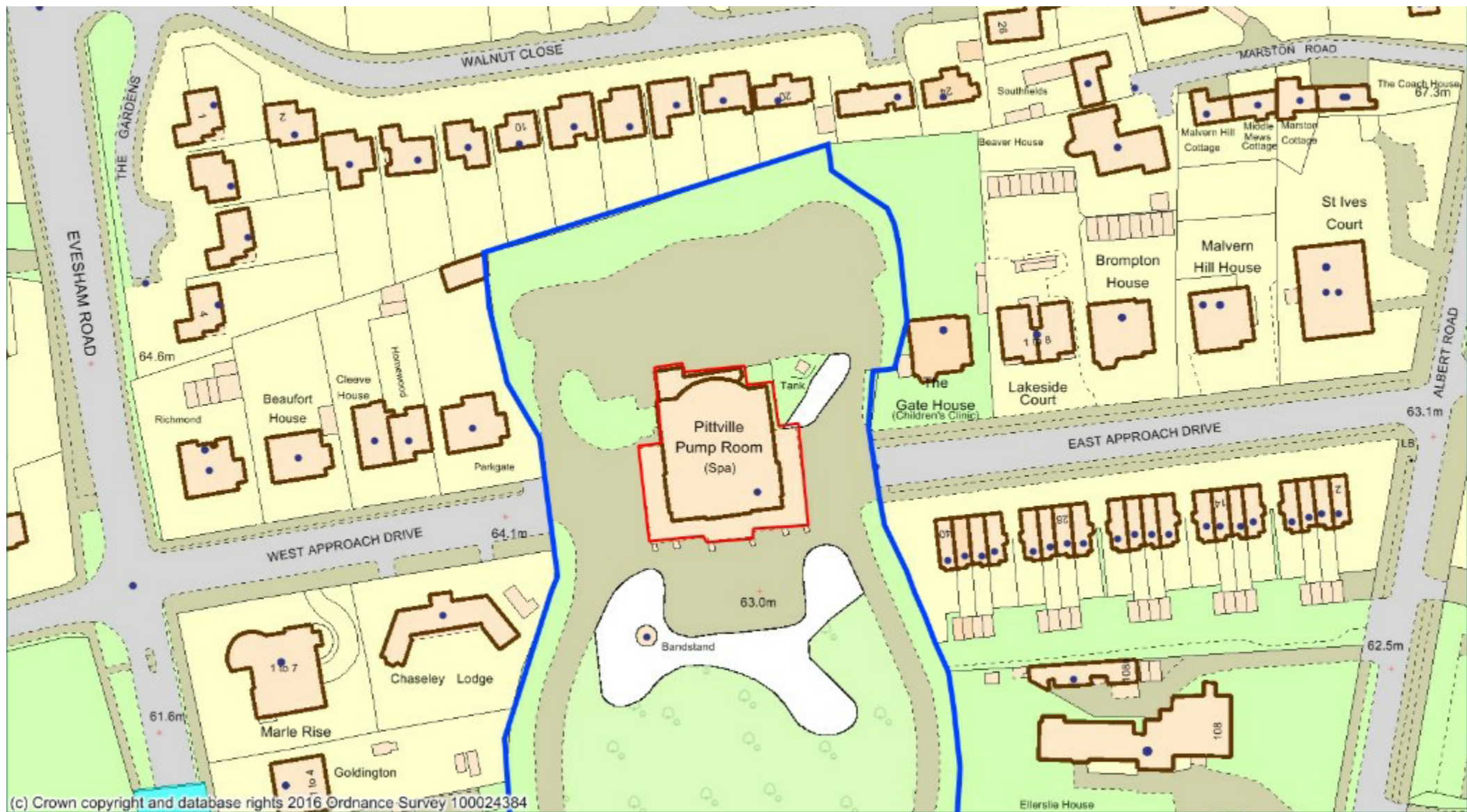


Pittville Pump Room (22/00340/LBC)

Various repair works [the installation of a steel plate arrangement in order to secure a rotten double beam and the making good of the underside of the roof over the colonnade].

The application is before committee as the building is owned by CBC.

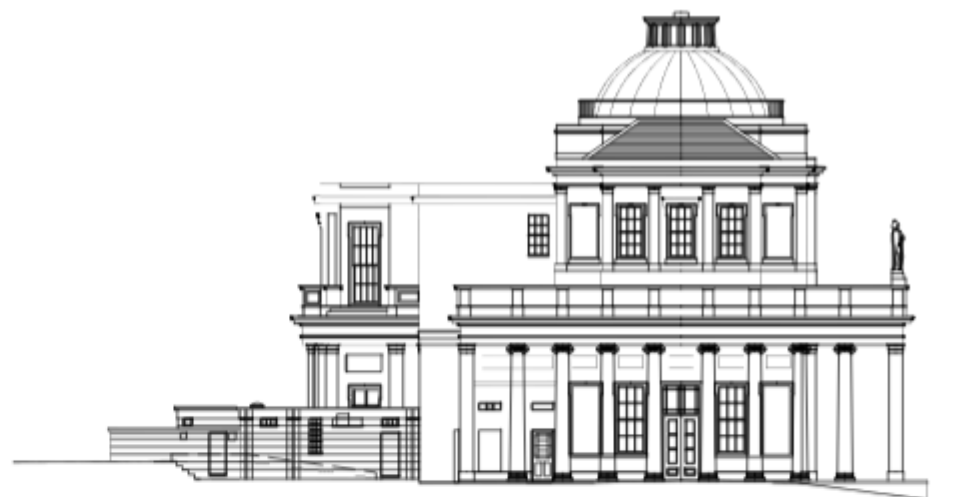
The recommendation is to grant consent.



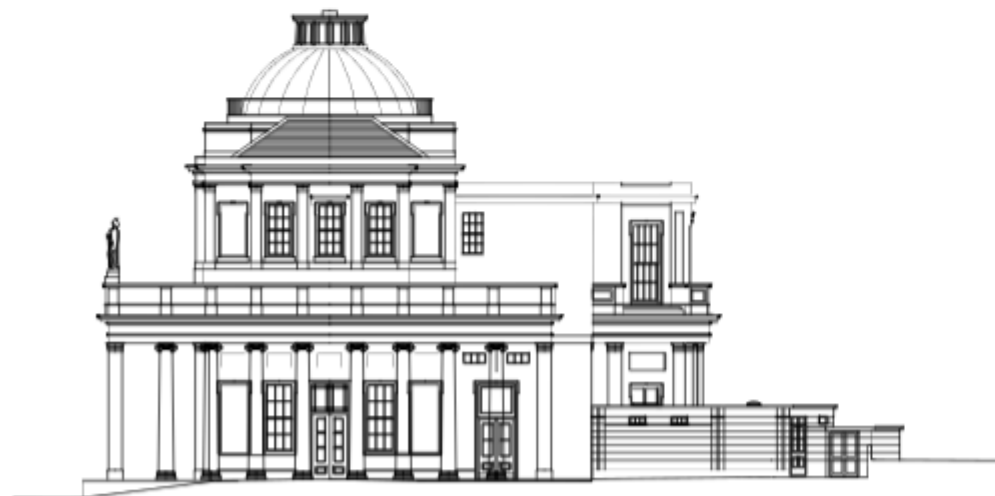




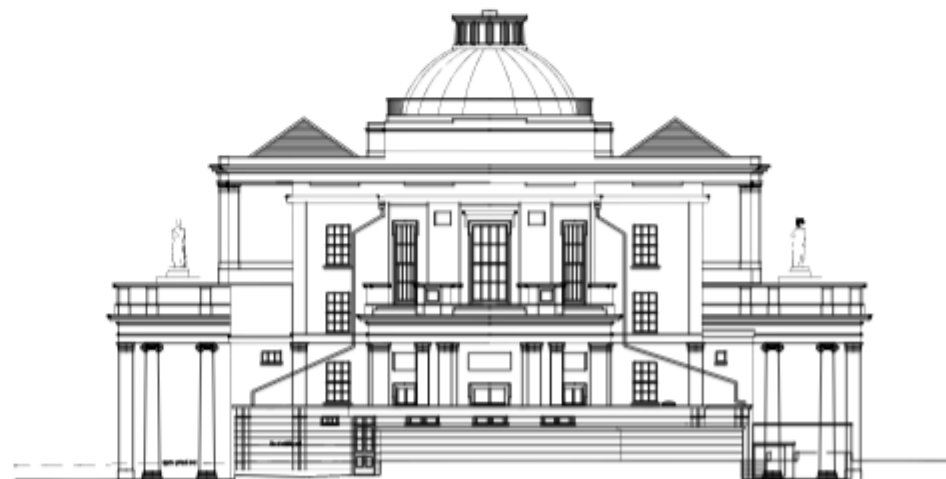
Front Elevation



West Elevation

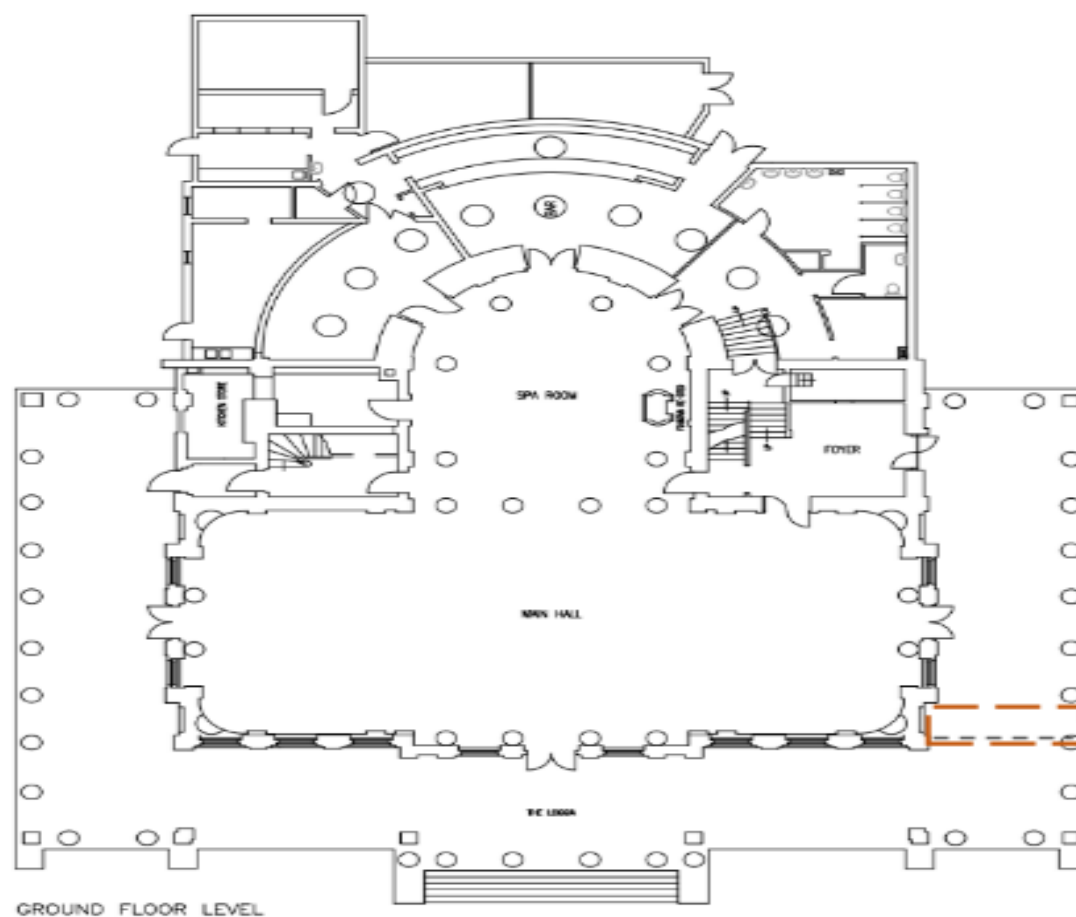


East Elevation



North Elevation

Supporting photograph and plan to show location of timber repair



Key

Area to be opened up for inspection by Clarke Nichols Marcel
- hatched area in drawing 01.

Double Timber beam location for repairs.

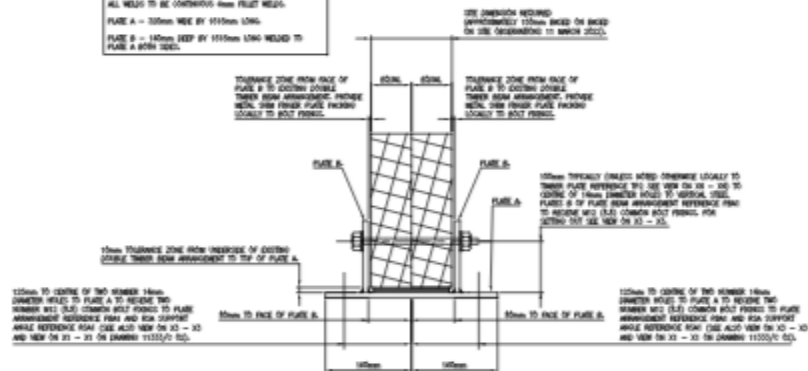


Key

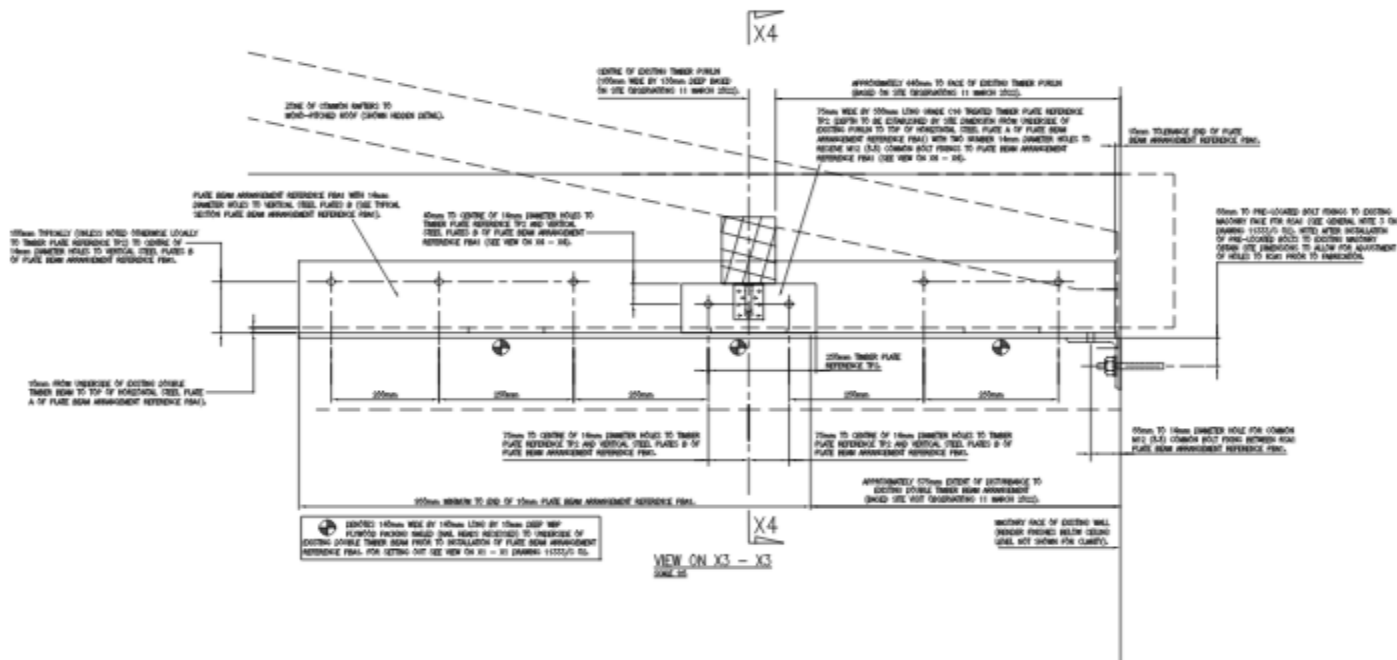
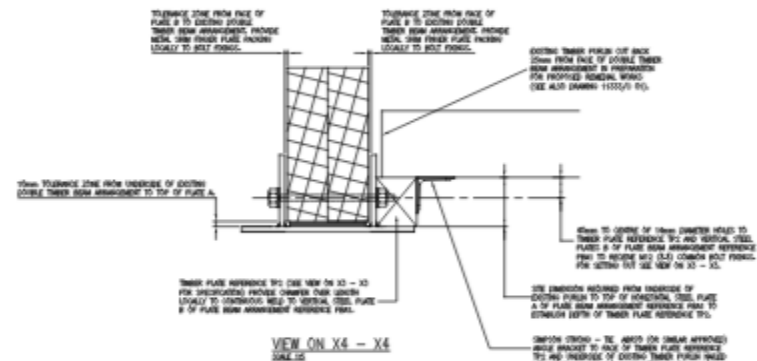
Area to be opened up for inspection by Clarke Nichols Marcel – hatched area in drawing 01.

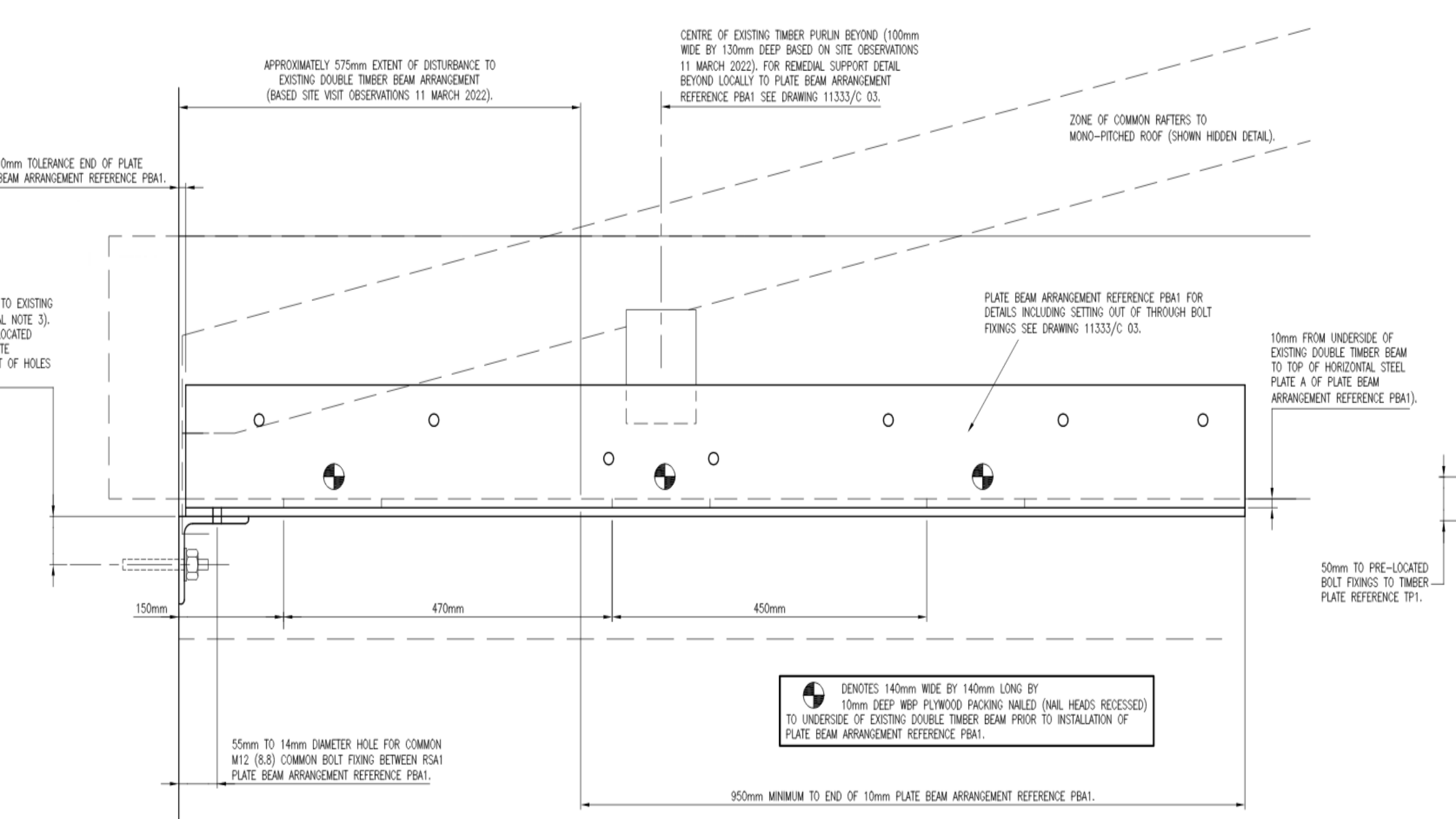
Double Timber beam location for repairs.

ALL PLATES TO BE 10mm THICK GRADE S275.
ALL WELDS TO BE CONTINUOUS RUNN FLUET WELDS.
PLATE A - 305mm WIDE BY 1115mm LONG.
PLATE B - 140mm DEEP BY 1115mm LONG WELDED TO
PLATE A 800mm LONG.



TYPICAL SECTION PLATE BEAM ARRANGEMENT REFERENCE PBA1.
JUNE 18





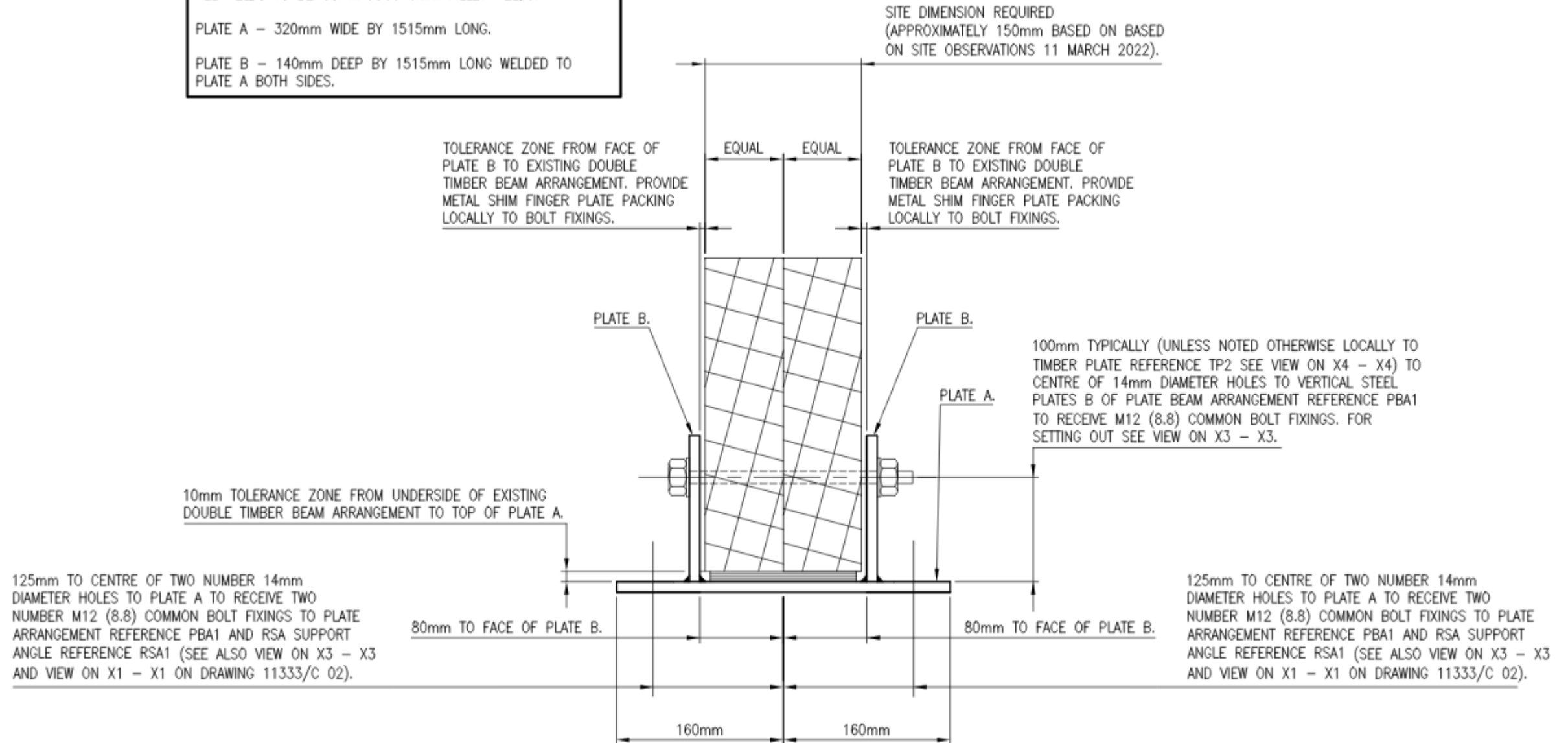
REFERENCE PBA1 SPECIFICATION

ALL PLATES TO BE 10mm THICK GRADE S275.

ALL WELDS TO BE CONTINUOUS 6mm FILLET WELDS.

PLATE A – 320mm WIDE BY 1515mm LONG.

PLATE B – 140mm DEEP BY 1515mm LONG WELDED TO PLATE A BOTH SIDES.



TYPICAL SECTION PLATE BEAM ARRANGEMENT REFERENCE PBA1



PHOTOGRAPH P1

(DOUBLE TIMBER ARRANGEMENT ASSUMED MAIN ROOF SUPPORT BEAM)

Key planning matter(s):

- The impact of the scheme on the significance of the listed building.

Conditions:

- Time.
- Plans.
- Disturbed surfaces made good.