

# Presentation to Cheltenham Borough Council Scrutiny Committee

10<sup>th</sup> September 2018

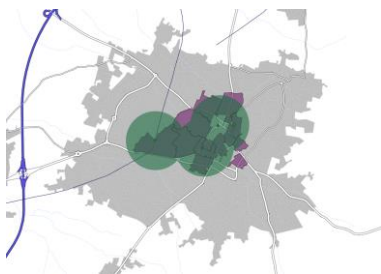
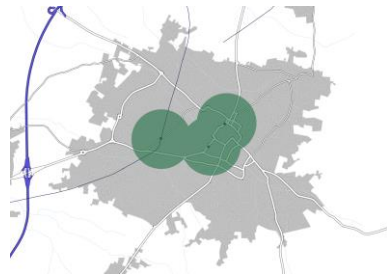
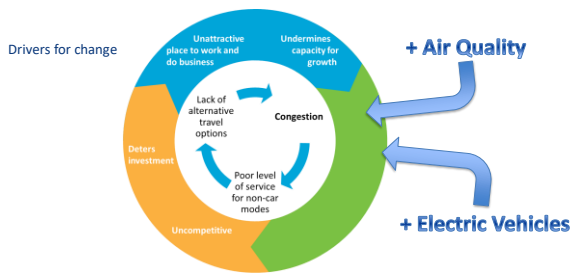


## Gloucestershire County Council

### Current and future plans for

- On Street Parking in Cheltenham
- Railway Station parking
- Arle Court Park & Ride
- Electric Vehicles
- Air Quality & Health Partnership

### Responses to submitted questions



More restrictive

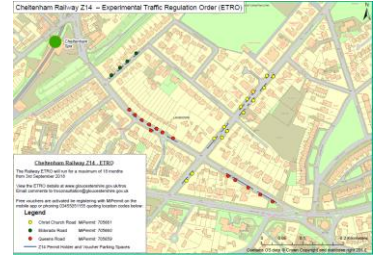
Less restrictive



### Railway Station Parking



**P** 8am Mon - Fri 8pm  
 Permit holders **Z14**  
 OR  
**Voucher parking only**  
 Max stay 12 hours  
 No return 10 hours  
 Telephone 0945 569 1155  
 Location 705661

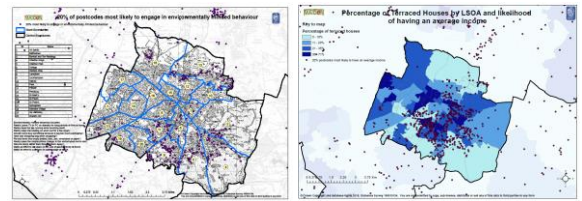


### Arle Court Park & Ride



### Electric Vehicles

Provision of on-street charging



### Air Quality & Health Partnership



“Smart” Parking?