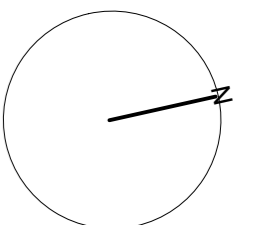


- 1 Do not scale from this drawing.
- 2 Any discrepancies to be referred to the Architect.
- 3 This drawing is to be read in conjunction with all relevant Specifications and other drawings issued by the Architect, Structural Engineer and other Consultants or Specialists.
- 4 This drawing is copyright and is not to be reproduced in part or whole without prior expressed permission of RRA Architects Ltd.



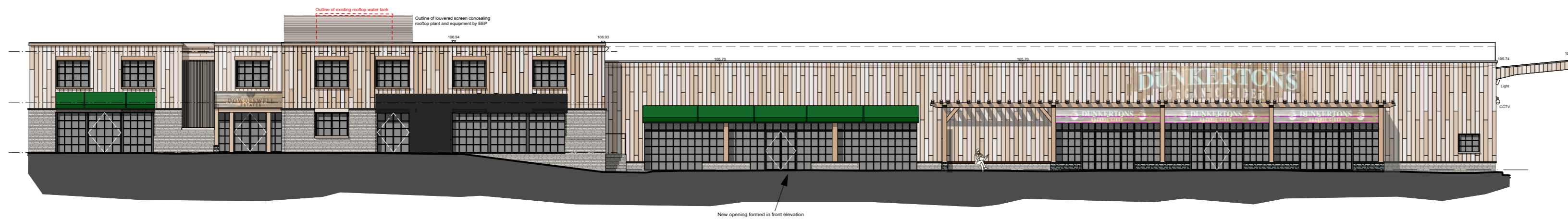
SCHEDULE OF AREAS

YARD	-		- 9,113 sq.ft
COTSWOLD HOUSE			
OVERALL GIFA	-		- 4,328 sq.ft
CIRCULATION	-		- 612 sq.ft
OFFICE 01	-		- 1,170 sq.ft
OFFICE 02	-		- 466 sq.ft
OFFICE 03	-		- 1,492 sq.ft
TOILETS	-		- 206 sq.ft
STORAGE	-		- 277 sq.ft
CIDER BUILDING			
OVERALL GIFA	-		- 31,081 sq.ft
CIRCULATION	-		- 100 sq.ft
FLORIST	-		- 959 sq.ft
CIDER SHOP	-		- 2080 sq.ft
PRODUCTION	-		- 27,573 sq.ft
TOILETS	-		- 143 sq.ft
KITCHENETTE	-		- 102 sq.ft

Areas schedule / annotations added	20171128	-	C
Revision Description	Date	Check	Rev



01 PROPOSED GROUND FLOOR PLAN
1:200 @ A1 / 1:400 @ A3



02 PROPOSED ELEVATION
1:200 @ A1 / 1:400 @ A3



RRA Architects Ltd

Watershed
Wye Street
Hereford HR2 7RB
T 01432 278707
E info@rra-arch.com
www.rra-arch.com

London T 020 7377 5458 Hereford T 01432 278707 Cheltenham T 01242 269374

Client
Dowdeswell Estates
Project
Cotswold Building Offices:
Dunkertons Cider Production & Distribution
Facility & Dowdeswell Estate Offices
The Barlands, London Road, Cheltenham,
GL52 6UT
Drawing Title
Proposed Ground Floor Plan

Status	Date	Drawn By
Local Authority	July 2017	TF
Scale	Drawing Number	Revision
1:200 @A1/1:400 @A3	2367 P(0) 237	C